

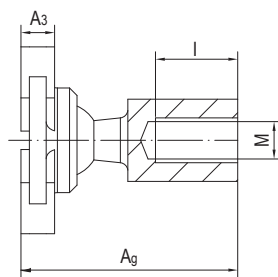
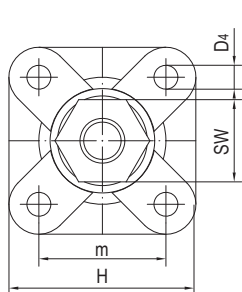
## GSB-IP法兰关节轴承，连接销 Flange spherical bearings with pins



### 产品特性 Product features

- 基座采用高强度和尺寸稳定性材料M163制成
- 连接销采用镀锌钢，可选304不锈钢
- 免维护和耐腐蚀
- 易连接和安装
- 直接装配并节约安装空间
- Housing made of high strength and shape-stable M163
- Ball studs made of zinc coating steel, 304 stainless steel is available
- Maintenance-free and corrosion-resistant
- Easy connection - easy assembly
- Fits directly and space-saving

### 标准规格 Standard specifications



产品编码 Part No.:

GSB-IP-06

内径 Inner diameter

IP 内螺纹 Inner thread

产品编码 Part No.	M [mm]	m [mm]	H [mm]	A <sub>9</sub> [mm]	A <sub>3</sub> [mm]	I [mm]	D <sub>4</sub> [mm]	SW [mm]	最大静态径向负载 Max. axial static load		最大静态轴向负载 Max. radial static load		重量 Weight [g]
									短期 Short-term [N]	长期 Long-term [N]	短期 Short-term [N]	长期 Long-term [N]	
GSB-IP-06	M6	17	25	29	4.5	11	3.2	SW11	150	75	350	175	16.4
GSB-IP-08	M8	22	33	36	5.5	12	4.3	SW14	250	125	750	375	34
GSB-IP-10	M10	26	38	43.5	6.5	16	5.3	SW17	140	70	1200	600	61.1

\*ES-不锈钢球头销根据要求提供 Stainless steel ball stud upon request